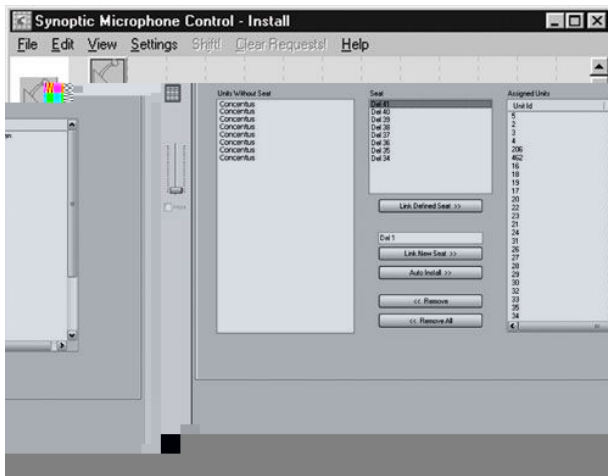




# LBB 4171/00 Synoptic Microphone Control



- ▶ Easily-created synoptic layout used for microphone control
- ▶ Single-point control of all microphone units
- ▶ Various microphone control options
- ▶ Output to printer and/or external equipment such as cameras
- ▶ On-screen help facility

This software module takes microphone control away from the traditional method of control panels and keys and replaces it with an extremely user-friendly, on-screen means of managing microphone status. A graphical representation of the contribution units in a conference venue is created and then used to control the microphone status of delegates. Through the use of different icons and colors, the user has an at-a-glance overview of the status of all conference participants. The result is a highly visual 'push-button' conference control facility. There are two modes of operation within Synoptic Microphone Control; layout mode and control mode.

## Functions

### Layout mode

In layout mode, the user creates a graphical representation of the contribution units present in the conference venue. This synoptic layout is a plan view of the conference venue. Layout mode contains dedicated tools for this purpose. Icons representing the contribution equipment are used to build up the layout. Each item of contribution equipment (delegate unit, chairman unit, podium or lavalier microphone, etc.) has its own icon. Viewing options that reduce the size of the icons make it easier to work with larger layouts. An

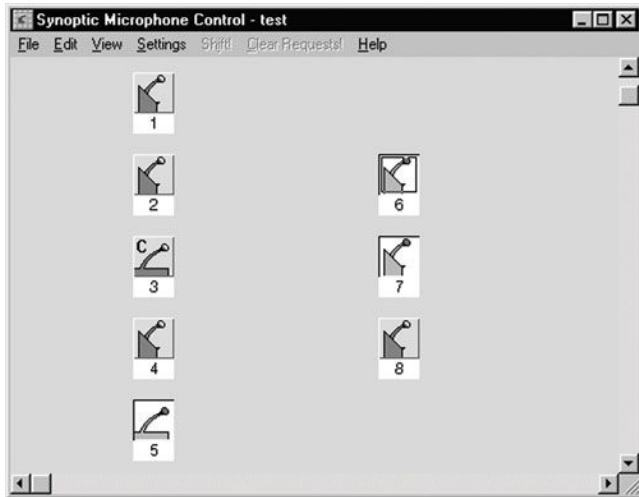
optional on-screen grid helps with alignment and a snap facility lines up icons with the grid lines. Seat numbers can be automatically assigned to each layout element. The synoptic layout can be changed simply and quickly. Contribution units can be moved by dragging them using the cursor. Standard Windows functions such as cutting and pasting can be used to move, remove or add elements to the layout.

### Control mode

While layout mode is used to create a synoptic floor plan of the conference venue (for preparation purposes), control mode is used to monitor and control a conference. The synoptic layout generated in layout mode becomes a control panel in control mode. The icons in the layout become functional, and are used as status indicators or buttons to initiate actions for the contribution unit the icon represents. The color of a particular icon is related to the state (request-to-speak, active, etc.) of the actual microphone it represents. Icons cannot be moved in control mode, but a layout can be edited by returning to layout mode. The state of a delegate microphone can be altered by clicking on the appropriate icon. Synoptic Microphone Control offers the following microphone control mode options:

- Control by operator with request-to-speak list (manual)

- Control by delegate with request-to-speak list (open)
- Control by delegate with override of other delegate microphones (first-in-first-out)



The synoptic layout is stored in a layout file. There are a number of options available to the user for working with these files, all of which are standard DCN Next Generation file options. These consist of opening, creating and saving files under a new name. Delegate microphone activity can be recorded on file or sent to a printer. Microphone activity data is also made available for controlling external equipment such as an automatic camera system. Synoptic Microphone Control has a facility to automatically test and scan all installed microphones individually, with or without a sound generator. The microphone under test is indicated on-screen and the results of the test are made known to the system operator.

## Ordering Information

### Model | Description

LBB 4171/00 Synoptic Microphone Control

**Americas:**  
Bosch Security Systems  
130 Perinton Parkway  
Fairport, New York, 14450, USA  
Phone: +1 585 223 4060  
Fax: +1 800 289 0096  
security.sales@us.bosch.com  
www.boschsecurity.us

**Europe, Middle East, Africa:**  
Bosch Security Systems B.V.  
P.O. Box 80002  
5600 JB Eindhoven, The Netherlands  
Phone: +31 (0) 40 27 83955  
Fax: +31 (0) 40 27 86668  
emea.securitysystems@bosch.com  
www.boschsecurity.com

**Asia-Pacific:**  
Bosch Security Systems Pte Ltd  
38C Jalan Pemimpin  
Singapore 577180  
Phone: +65 6319 3450  
Fax: +65 6319 3499  
apr.securitysystems@bosch.com  
www.boschsecurity.com

### Represented by