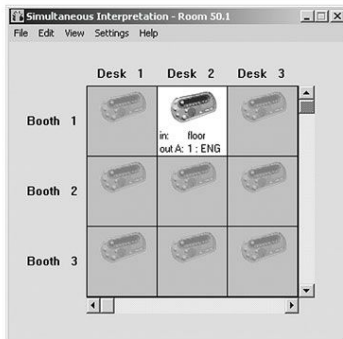




# LBB 4172/00 Simultaneous Interpretation



- ▶ Can accommodate 186 interpreter desks
- ▶ Online monitoring of interpretation activities
- ▶ Facilitates normal and relay interpretations
- ▶ Microphone mode options
- ▶ Specifying a language for each of the system interpretation channels
- ▶ Determining the microphone interlock mode
- ▶ Online monitoring of interpreter activities during a conference
- ▶ On-screen help facility

Simultaneous interpretation is essential for international congress venues. The Simultaneous Interpretation program supports the preparation of simultaneous interpretation facilities and the monitoring of interpreter activities during a conference. It accommodates 31 interpreter booths, each with up to 6 interpreter desks.

## Functions

The main window has two display modes, both with graphics for easy management of information. One gives a channel-oriented overview of system status, such as which language is present on that channel, the mnemonic for that language, on which language the interpretation is based, and the number of the desk and booth generating that language. The other display mode gives the same information in a different form, providing an overview of the status of each desk in each booth. This includes booth and desk status (active or non-active), and the language in and out of each active desk. In addition, the software enables the operator to establish microphone interlocks, between booths and within booths, with or without using an override facility. In interlock mode, the active microphone must first be turned off before any other microphones can become active. In override mode, any microphone can

automatically override the current active microphone and become active. The interpreter system settings are stored in an interpreter configuration file. There are a number of options available to the user for working with these files, all of which are standard DCN NG file options. These consist of opening, creating and saving files under a new name. A print function enables a hard copy printout of desk and channel language assignment— ideal for use as a reference to current system settings.

## Ordering Information

### Model | Description

LBB 4172/00 Simultaneous Interpretation