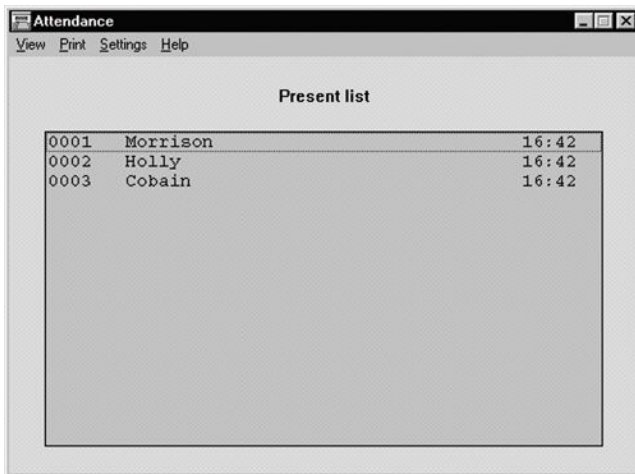




LBB 4178/00 Attendance Registration



- ▶ Registration using chip card with or without PIN-code, or present key
- ▶ Access control facilities
- ▶ All data instantly available to operator
- ▶ Print facility to reproduce data in several formats
- ▶ On-screen help facility

Functions

The functionality of Attendance Registration falls in to two categories:

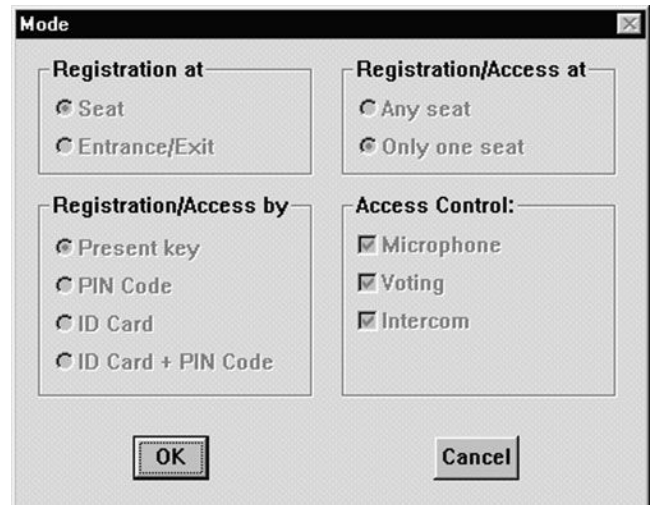
Registration:

It is possible to specify entrance requirements that conference participants have to meet before entering the conference room. This normally means participants have to insert a chip card in a chip card reader, either at the entrance to the conference venue or at the contribution unit. Registration at a contribution unit can also be by means of pressing the 'Present' key. It is possible to display lists on-screen of all 'present' and 'absent' participants, and print hard copies of these lists. There is also a window that can be permanently displayed on-screen that gives an overview of all participants who have registered their presence or absence.

Access:

The settings specified for registration can also be used for access. This means that although participants can enter the conference venue, they cannot use any of the contribution unit facilities (such as microphone, voting, intercom) without first satisfying access requirements.

Access is also controlled by means of chip cards, with or without PIN code. There is also an option whereby participants register their presence at the entrance using a chip card reader, and a specific contribution unit is then made available for them. You can also control where participants sit by specifying whether they can occupy any seat or a particular, pre-defined one.



Ordering Information

Model | Description

LBB 4178/00 Attendance Registration

Americas:
Bosch Security Systems
130 Perinton Parkway
Fairport, New York, 14450, USA
Phone: +1 585 223 4060
Fax: +1 800 289 0096
security.sales@us.bosch.com
www.boschsecurity.us

Europe, Middle East, Africa:
Bosch Security Systems B.V.
P.O. Box 80002
5600 JB Eindhoven, The Netherlands
Phone: +31 (0) 40 27 83955
Fax: +31 (0) 40 27 86668
emea.securitysystems@bosch.com
www.boschsecurity.com

Asia-Pacific:
Bosch Security Systems Pte Ltd
38C Jalan Pemimpin
Singapore 577180
Phone: +65 6319 3450
Fax: +65 6319 3499
apr.securitysystems@bosch.com
www.boschsecurity.com

Represented by