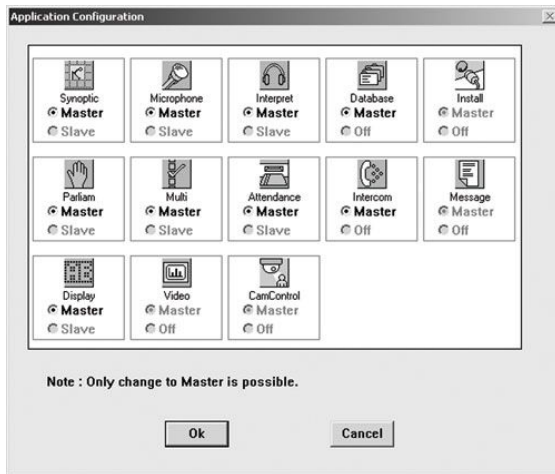




# LBB 4189/00 DCN Next Generation Multi PC



- ▶ Master / Slave configuration
- ▶ On-screen help facility

The Multi PC software module is needed when more than one PC is required to control the DCN Next Generation system. All Slave PCs in a multi-PC environment are connected via Ethernet to the Master PC, which is connected the CCU.

## Functions

This module sets up the master/slave mode of all other modules in a multi PC environment. The Multi PC configuration is accessed from the menu in the Startup screen (LBB 4190/00).

## Ordering Information

### Model | Description

LBB 4189/00 DCN Next Generation Multi PC